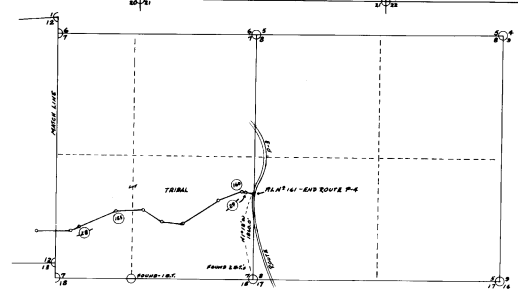
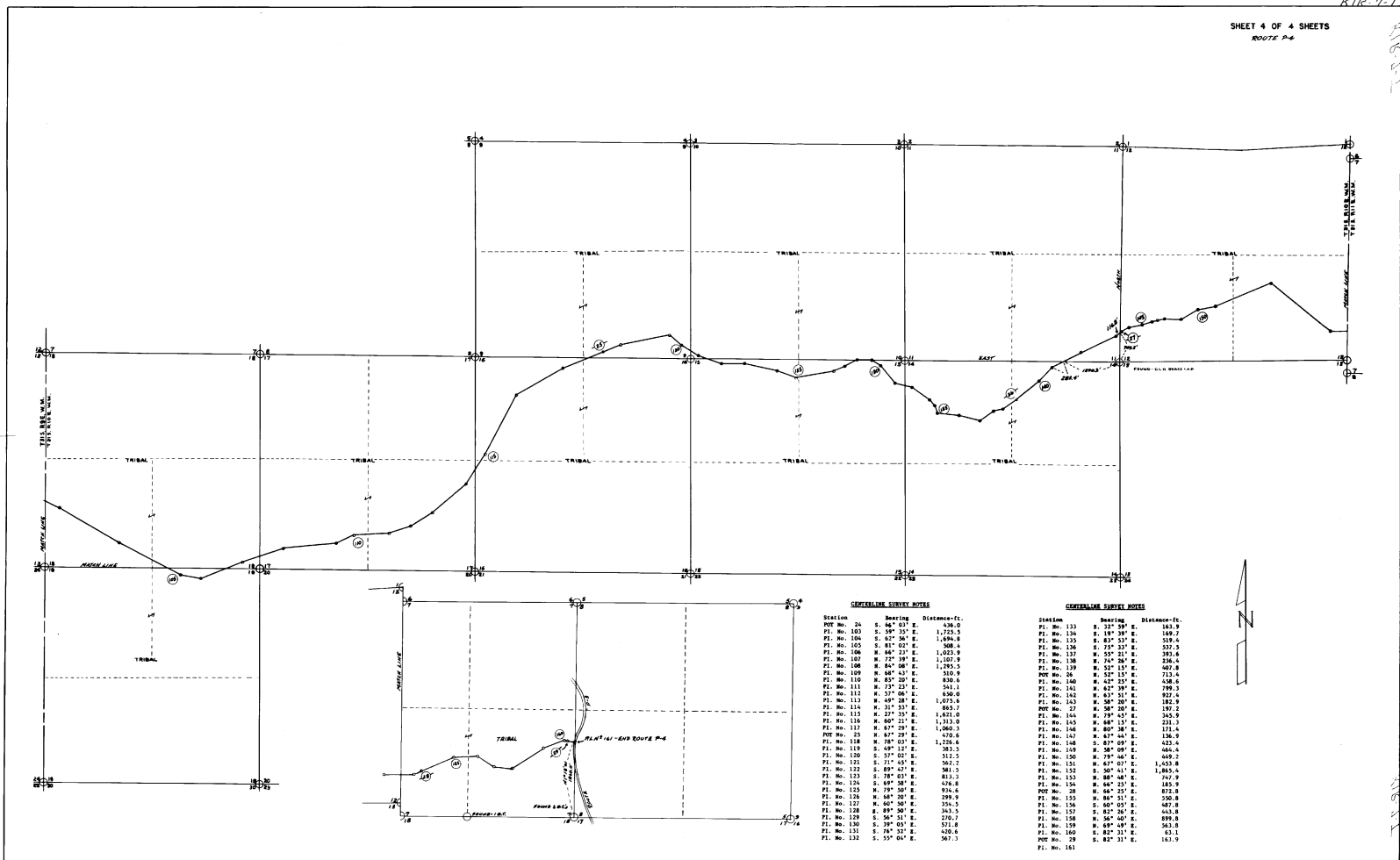


KIR-7-T

SHEET 4 OF 4 SHEETS  
ROUTE P-6



**GENERAL SURVEY NOTES**

Station	Bearing	Distance - ft.
PT No. 26	S. 64° 03' E.	436.0
PI No. 103	S. 09° 35' E.	1,775.5
PI No. 104	S. 62° 58' E.	1,894.8
PI No. 105	S. 81° 02' E.	508.4
PI No. 106	N. 64° 23' E.	1,023.9
PI No. 107	N. 72° 38' E.	1,021.9
PI No. 108	N. 84° 08' E.	1,295.5
PI No. 109	N. 68° 43' E.	320.9
PI No. 110	N. 83° 28' E.	830.6
PI No. 111	N. 73° 23' E.	341.1
PI No. 112	N. 57° 08' E.	850.0
PI No. 113	N. 69° 28' E.	1,075.6
PI No. 114	N. 31° 53' E.	885.7
PI No. 115	N. 22° 55' E.	1,021.0
PI No. 116	N. 60° 23' E.	1,313.0
PI No. 117	N. 87° 28' E.	1,060.3
PT No. 25	N. 67° 28' E.	470.6
PI No. 118	N. 78° 03' E.	1,128.6
PI No. 119	S. 49° 12' E.	383.5
PI No. 120	S. 37° 02' E.	312.5
PI No. 121	S. 21° 45' E.	562.2
PI No. 122	S. 89° 47' E.	561.5
PI No. 123	S. 78° 53' E.	813.3
PI No. 124	S. 68° 40' E.	726.8
PI No. 125	N. 79° 50' E.	934.6
PI No. 126	N. 60° 50' E.	326.5
PI No. 127	N. 89° 50' E.	343.5
PI No. 128	S. 56° 31' E.	276.7
PI No. 129	S. 39° 03' E.	571.8
PI No. 130	S. 14° 32' E.	428.8
PI No. 131	S. 55° 04' E.	567.3

**GENERAL SURVEY NOTES**

Station	Bearing	Distance - ft.
PI No. 133	E. 72° 38' E.	283.9
PI No. 134	E. 18° 28' E.	288.2
PI No. 135	E. 83° 53' E.	519.4
PI No. 136	S. 75° 23' E.	537.3
PI No. 137	N. 55° 21' E.	393.4
PI No. 138	N. 54° 28' E.	236.4
PI No. 139	N. 52° 25' E.	602.8
PI No. 140	N. 52° 25' E.	213.4
PI No. 141	N. 42° 25' E.	458.5
PI No. 142	N. 42° 25' E.	922.6
PI No. 143	N. 50° 20' E.	282.9
PT No. 27	N. 50° 20' E.	187.2
PI No. 144	N. 73° 42' E.	345.9
PI No. 145	N. 68° 13' E.	231.3
PI No. 146	N. 80° 05' E.	421.4
PI No. 147	N. 87° 04' E.	136.9
PI No. 148	N. 87° 05' E.	622.4
PI No. 149	N. 58° 09' E.	464.4
PI No. 150	N. 79° 42' E.	469.2
PI No. 151	N. 87° 07' E.	1,453.8
PI No. 152	N. 50° 41' E.	1,865.4
PI No. 153	N. 88° 48' E.	747.9
PI No. 154	N. 88° 48' E.	1,845.9
PT No. 28	N. 64° 21' E.	872.8
PI No. 155	N. 86° 25' E.	580.8
PI No. 156	S. 60° 03' E.	687.8
PI No. 157	S. 82° 48' E.	643.8
PI No. 158	N. 56° 40' E.	899.8
PI No. 159	N. 65° 48' E.	561.8
PI No. 160	S. 82° 31' E.	431.1
PT No. 29	N. 82° 31' E.	161.9
PI No. 161		