



BOARD OF COMMISSIONERS
Agenda Item Summary

Agenda Category:	Agreement; Bids/Quotes/Proposals	Item No.
------------------	----------------------------------	----------

Date: June 13, 2023

Department: Sheriff's Office, Chris Kaber, Sheriff

Issue: In the matter of requesting approval of the purchase of eight barriers for the top tier of the jail; to include shipping for the Sheriff's Office – Corrections

Background: The purchases from U-Line. Purchase to include barriers to cage in the top tier of the Klamath County Jail to prevent Adults in Custody from falling/jumping. The fiscal impact of the barriers and shipping in the amount of \$14,977.74 to be paid from the Sheriff's Office General Fund - Corrections.

There have been multiple adults in custody that have jumped from the top tier causing severe injuries to themselves in the past few months. These barriers will prevent further injuries and potential lawsuits. These specific sized barriers were not available through state contract on Oregon Buys. A on-site inspection by Modoc Contracting concluded the barriers they use were not the correct size or material. Because of the 7-foot-tall ceiling, all other companies researched on the internet including Getvelox.com, McMaster-Carr.com, Merlin-Industrial.com. All sites only have 6 foot and 8-foot barriers available.

Recommended Motion: Approve the Klamath County Sheriff's Office to accept the quote and to sign for the purchase of barriers to include shipping from U-Line. **Fiscal Impact:** Expenditures in the amount of \$14,977.74 to be paid from the Sheriff's Office General Fund - Corrections.

DONE AND DATED this _____ day of _____, 20____.

Chair
Approved
Denied

Vice-Chair
Approved
Denied

Commissioner
Approved
Denied



1-800-295-5510

Search



Products

Uline Products

Quick Order

Catalog Request

Special Offers

About Us

Careers

Continue Shopping

Shopping Cart

Save | Empty Cart | Forward

Add Product by Model #

Model #	Description	Qty	Price	Total	Remove
H-5611-7	Wire Machine Guard Panel - 8 x 7'	27	\$245.00/EA	\$6,615.00	
H-5610-7	Wire Machine Guard Panel - 6 x 7'	5	\$210.00/EA	\$1,050.00	
H-10462-7	Wire Machine Guard Panel - 5 x 7'	5	\$190.00/EA	\$950.00	
H-5609-7	Wire Machine Guard Panel - 4 x 7'	5	\$160.00/EA	\$800.00	
H-5607-7	Wire Machine Guard Post - 7 1/2'	55	\$90.00/EA	\$4,950.00	
SUBTOTAL =				\$14,365.00	

Update

Checkout

Shipping | Sale Code:

Add

| Questions?

\$300+ orders are eligible for a free item.

Kevin & I got together & this is
 what we both came up with



1-800-295-5510

[View Cart](#)

[Help](#)

[Chat Live](#)

SELECT SHIPPING METHOD

[ADDRESS](#)

SHIPPING

[PAYMENT](#)

[REVIEW AND SUBMIT](#)

[Continue](#)

Shipping Method

Delivery Time

Motor Freight - Oak Harbor

1 day

\$612.74 ▼

- Options:**
- Inside Delivery
 - Liftgate Service
 - Delivery Appointment (Adds 1 day to delivery time)

Additional charges may apply for Inside Delivery and Liftgate services.

- UPS Ground is not available for this order. Certain item(s) exceed UPS Ground size, weight, or hazardous material restrictions.

Shipping Date

5/16/2023



Delivery Date

5/17/2023

Warehouse

LACEY, WA

[Add Special Instructions](#)

[Continue](#)



[Enlarge & Video](#)

WIRE MACHINE GUARDS

Protect your staff and safeguard your automated equipment.

- Create a perimeter barrier between employees and potential hazards.
- Posts - Welded to 7/16" steel base plates. 2" square, 11-gauge posts. 6 x 6" mounting plates.
- Panels - Heavy-duty 8-gauge wire mesh panels with 1 3/8" square openings.
- Doors - Hinged doors provide access. Padlockable.



POSTS -

6 x 6" mounting plate

MODEL NO.	WIDTH	WT. (LBS.)	5 1/2' HEIGHT		ADD TO CART
			PRICE EACH		
			1	4+	
H-5607	2"	19	\$85	\$80	1 ADD

Meets OSHA and ANSI Specifications

WT. (LBS.)	7 1/2' HEIGHT		ADD TO CART
	PRICE EACH		
	1	4+	
23	\$95	\$90	1 ADD

SHIPS VIA MOTOR FREIGHT

PANELS -

6" floor clearance

MODEL NO.	WIDTH	WT. (LBS.)	5' HEIGHT		ADD TO CART
			PRICE EACH		
			1	4+	
H-5608	2'	30	\$85	\$80	1 ADD
H-10461	3'	39	115	105	1 ADD
H-5609	4'	45	140	130	1 ADD
H-10462	5'	53	170	160	1 ADD
H-5610	6'	60	190	180	1 ADD
H-5611	8'	75	220	210	1 ADD

WT. (LBS.)	7' HEIGHT		ADD TO CART
	PRICE EACH		
	1	4+	
34	\$110	\$105	1 ADD
43	200	190	1 ADD
50	170	160	1 ADD
60	200	190	1 ADD
68	220	210	1 ADD
87	255	245	1 ADD

SHIPS VIA MOTOR FREIGHT

DOORS -

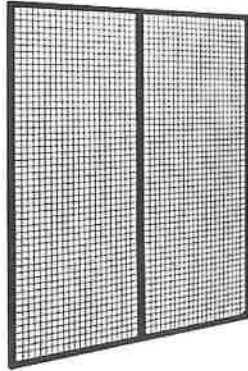
6" floor clearance

MODEL NO.	WIDTH	WT. (LBS.)	5' HEIGHT		ADD TO CART
			PRICE EACH		
			1	4+	
H-5612	4'	56	\$260	\$245	1 ADD

WT. (LBS.)	7' HEIGHT		ADD TO CART
	PRICE EACH		
	1	4+	
64	\$295	\$280	1 ADD

SHIPS VIA MOTOR FREIGHT

Wire Machine Guard Panel - 6 x 7'



Enlarge & Video

Protect your staff and safeguard your automated equipment.

- Create a perimeter barrier between employees and potential hazards.
- Heavy-duty 8-gauge wire mesh panels with 1 3/8" square openings.
- 6" floor clearance.
- Use with Posts and Door sold separately.

SPECIFY HEIGHT: 5' 7'

Meets OSHA and ANSI Specifications

MODEL NO.	DESCRIPTION	WIDTH	WT. (LBS.)	PRICE EACH		HEIGHT	IN STOCK	SHIPS TODAY
				1	4+			
H-5610-7	Panel	6'	68	\$220	\$210	7'	1	<input type="button" value="ADD"/>

SHIPS VIA MOTOR FREIGHT

[Additional Info](#) [Shopping Lists](#) [Request a Catalog](#)

SAME DAY SHIPPING

HUGE SELECTION IN STOCK

SHIPS FROM 13 LOCATIONS



1-800-295-5510

Search



Products Uline Products Quick Order Catalog Request Special Offers About Us Careers

Home > All Products > Warehouse Equipment / Supplies > Safety Guards / Barriers > Wire Machine Guards

Wire Machine Guard Post - 7 1/2'



Enlarge & Video

Protect your staff and safeguard your automated equipment.

- Create a perimeter barrier between employees and potential hazards.
- Posts are welded to 7/16" steel base plates. 2" square, 11-gauge posts.
- 6 x 6" mounting plates.
- Mounting hardware included.
- Use with [Panels](#) and [Door](#) sold separately.

SPECIFY HEIGHT:

Meets OSHA and ANSI Specifications

MODEL NO.	DESCRIPTION	WIDTH	WT. (LBS.)	PRICE EACH		HEIGHT	IN STOCK SHIPS TODAY
				1	4+		
H-5607-7	Post	2"	23	\$95	\$90	7 1/2'	1 <input type="button" value="ADD"/>

SHIPS VIA MOTOR FREIGHT

[Additional Info](#) [Shopping Lists](#) [Request a Catalog](#)

SAME DAY SHIPPING

HUGE SELECTION IN STOCK

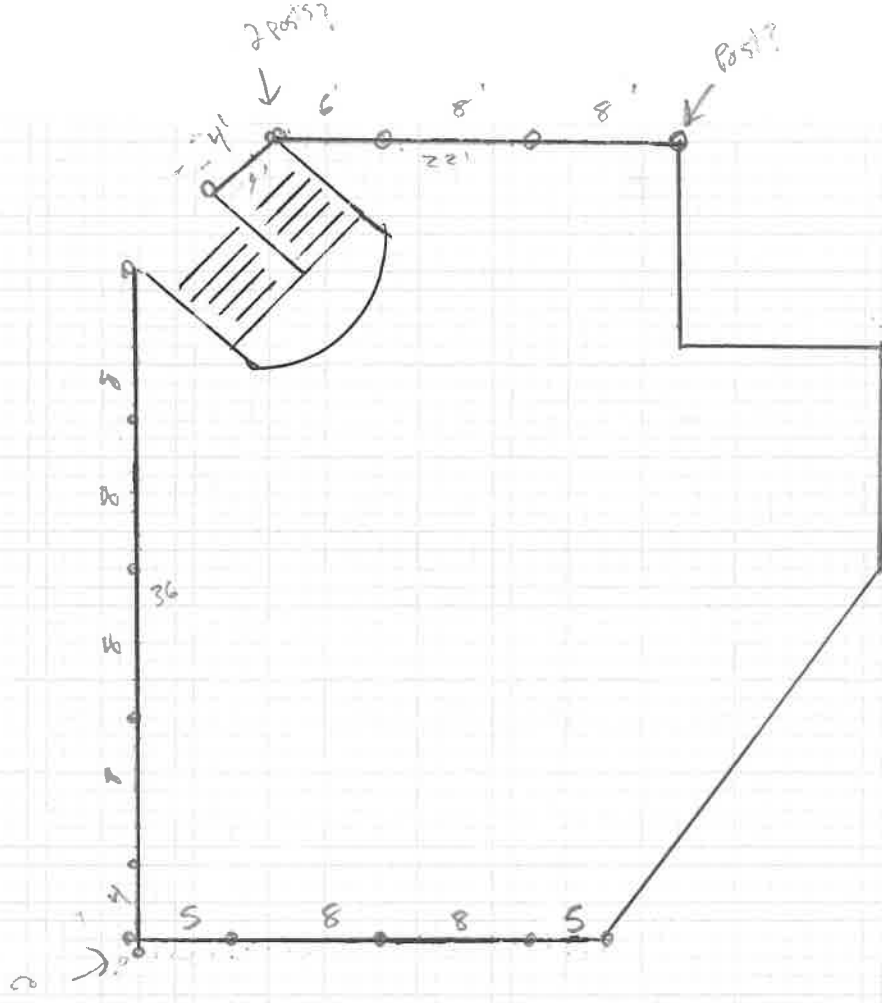
SHIPS FROM 13 LOCATIONS

B & C

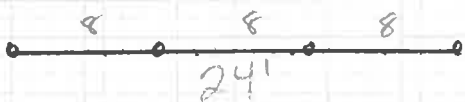
← Already Caged

- 8' - III III
- 6' - I
- 5' - II
- 4' - II

Posts - 17

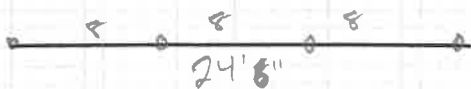


AR



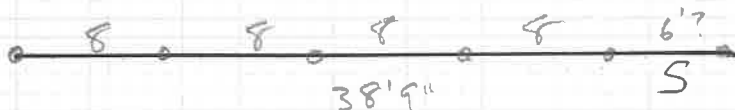
8-~~4~~ 3
Post-~~4~~ 4

AA



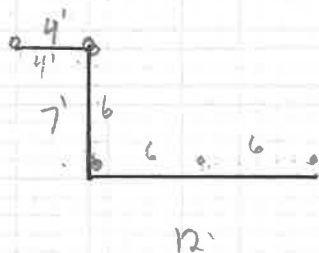
8-~~4~~ 3
Post-~~4~~ 4

AT



8-~~4~~ 4
6-1
Post-6

AP



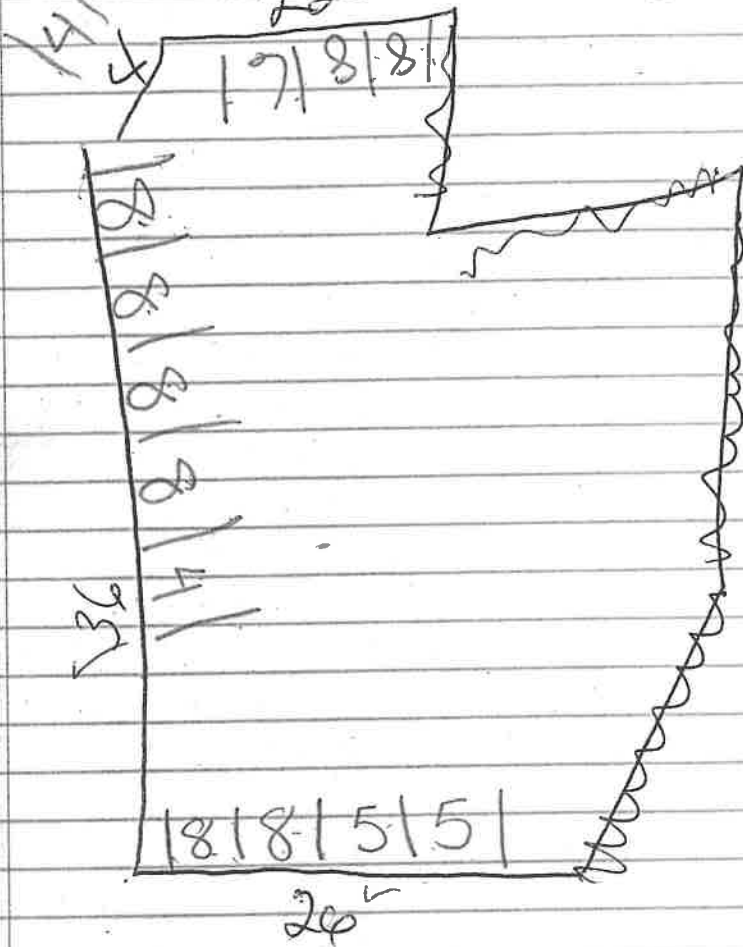
6'-3,
4-1
Post-7

$$\begin{aligned}
 8' & - 3+3+4+8+8 = 26 \\
 6' & - 1+3+1+1 = 5 \\
 5' & - 2+2 = 4 \\
 4' & - 1+2+2 = 5 \\
 \text{Post} & - 4+4+6+7+7+7 = 55
 \end{aligned}$$

1x4
2 poles ✓

2x8
2x6
2x4
4 poles ✓

C Pod



9/16" Floor to ceiling
6' hand rail

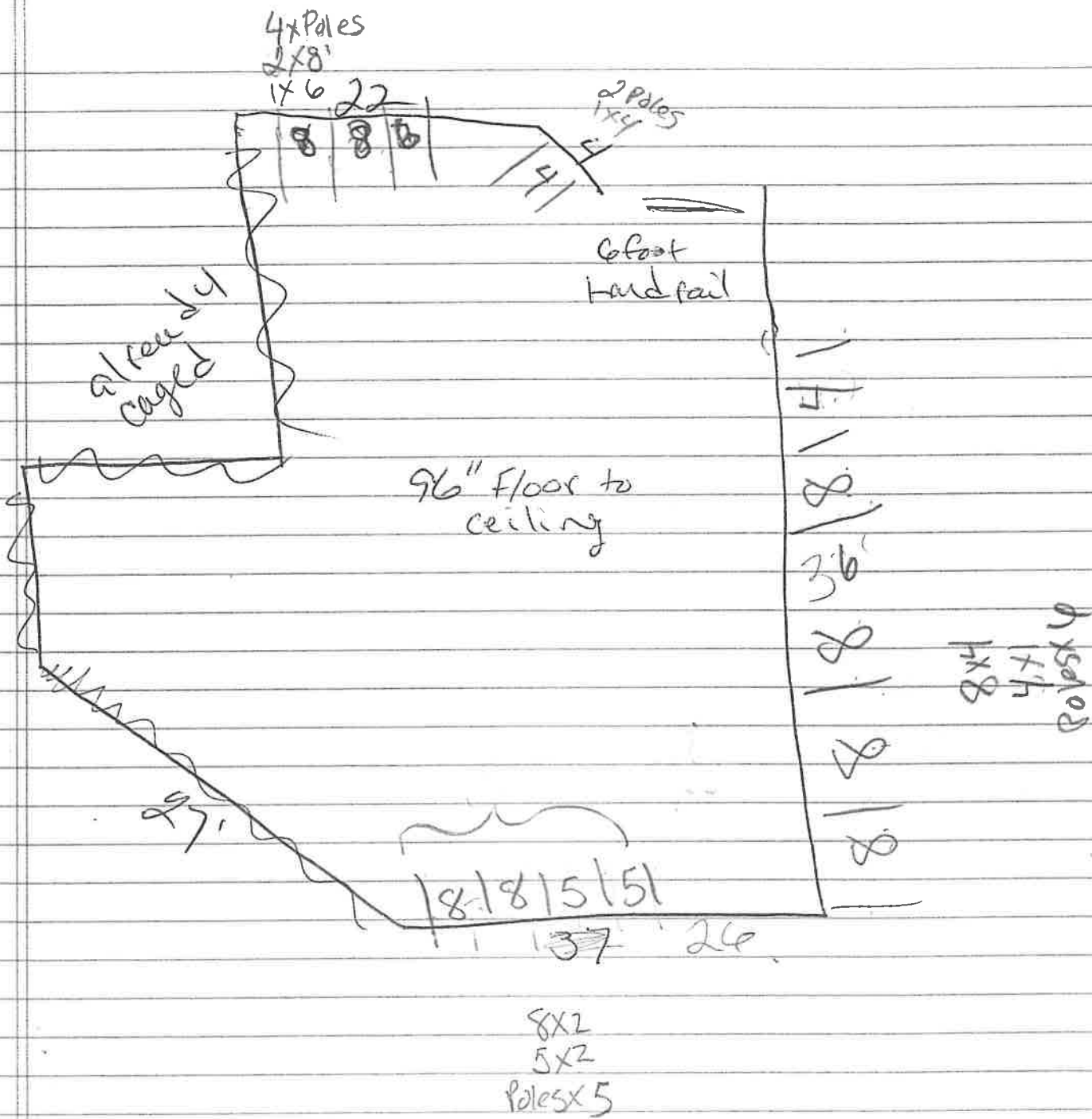
2x8'	4x8'		2x8'	= 8x8'
2x5'	1x4'	1x4	6x1'	1x6'
Poles x 5	Poles x 6	Poles x 2	Poles x 4	2x5'
				2x4'
				Poles x 17 ✓

8 - 8
6 - 1
5 - 2
4 - 2

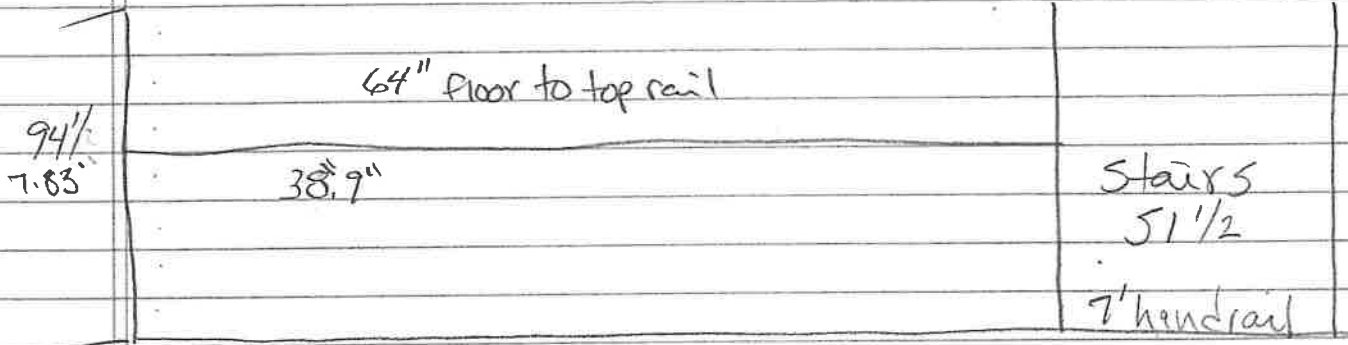
Posts - 19

12

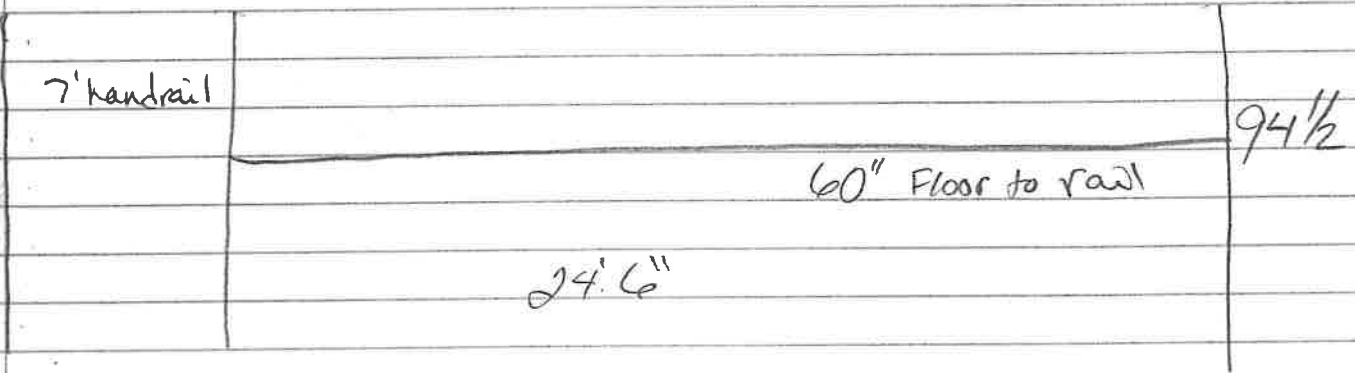
B pod



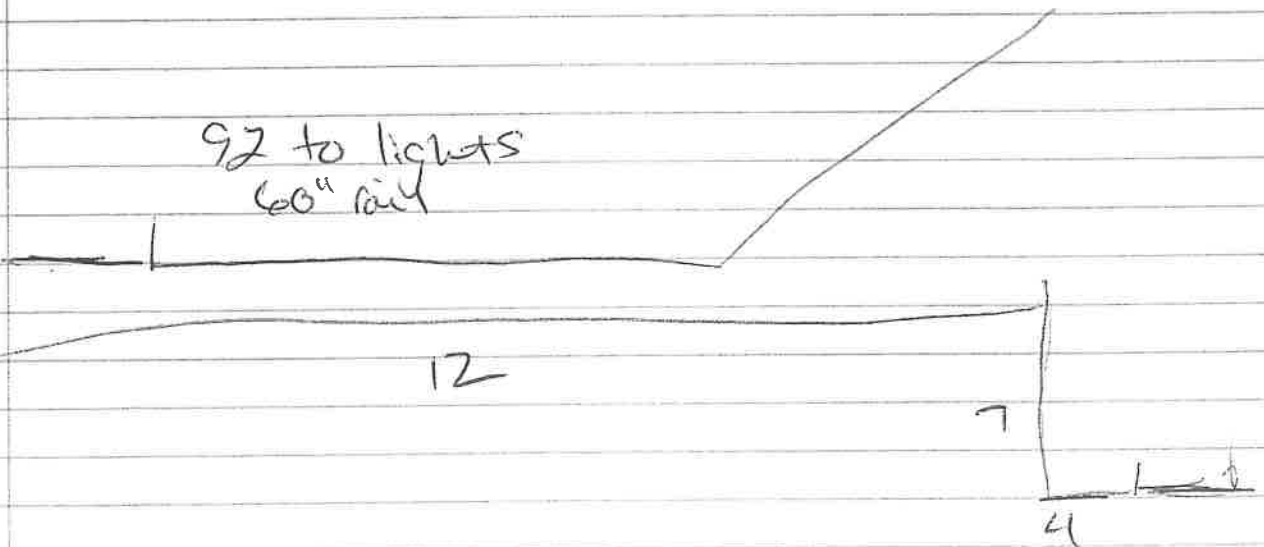
AT



AA



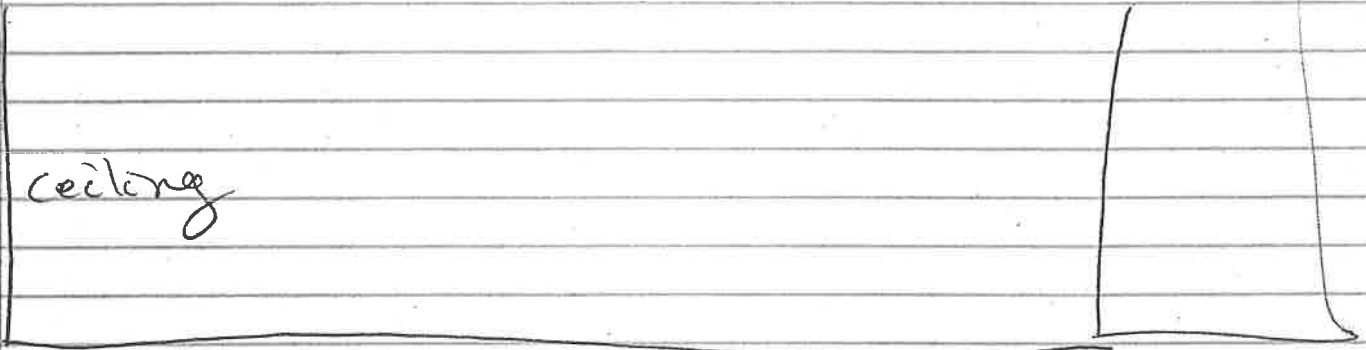
AP



AF

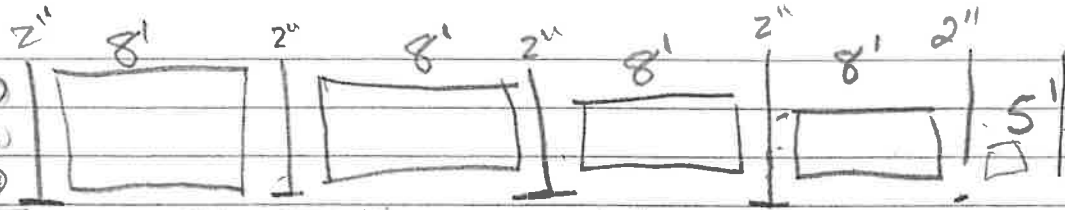
94 ceiling

24'



AT

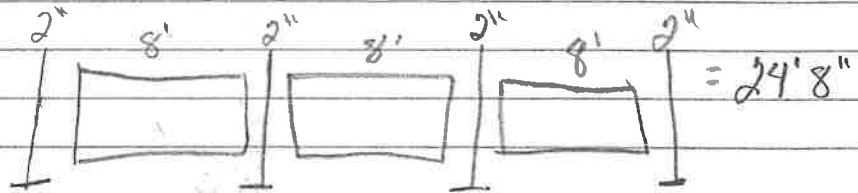
$4 \times 8' = 348$
 $1 \times 5' = 200$
 $6 \times \text{Poles} = 540$
1,120



$348 + 60 + 138 = 546 \text{ lbs}$

AA

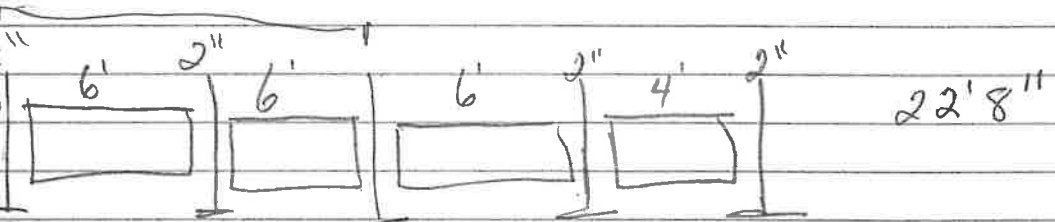
$4 \times 8' = 980$
 $4 \times \text{Poles} = 360$
1340



$348 + 92 = 440 \text{ lbs}$

AP

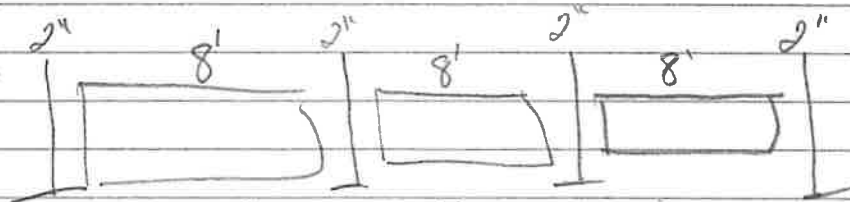
$1 \times 4' = 70$
 $3 \times 6' = 1320$
 $5 \text{ poles} = 450$
1,940



$50 + 204 + 115 = 369 \text{ lbs}$

AF

$8 \times 3' = 765$
 $4 \text{ poles} = 360$
1,125



$261 + 92 = 353 \text{ lbs}$

B

$8 \times 8' = 1960$
 $1 \times 6' = 220$
 $2 \times 5' = 400$
 $2 \times 4' = 340$

$\text{Poles} \times 17 = 1530$
4,450

C

$8 \times 8' = 1960$
 $1 \times 6' = 220$
 $2 \times 5' = 400$
 $2 \times 4' = 340$

$\text{Poles} \times 17 = 1530$
4,450



$696 + 68 + 120 + 80 + 391 = 1355 \text{ lbs}$